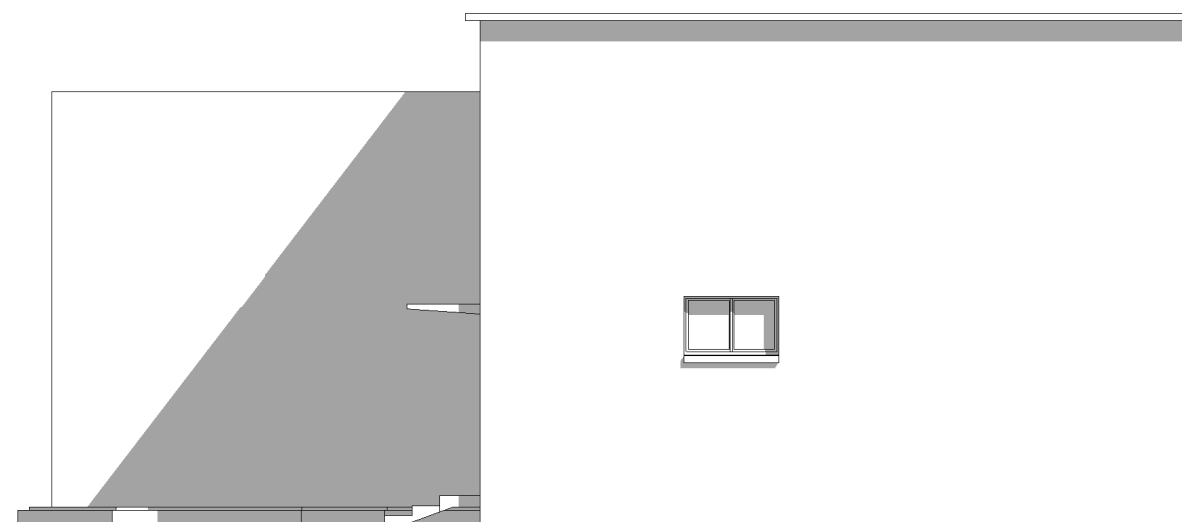
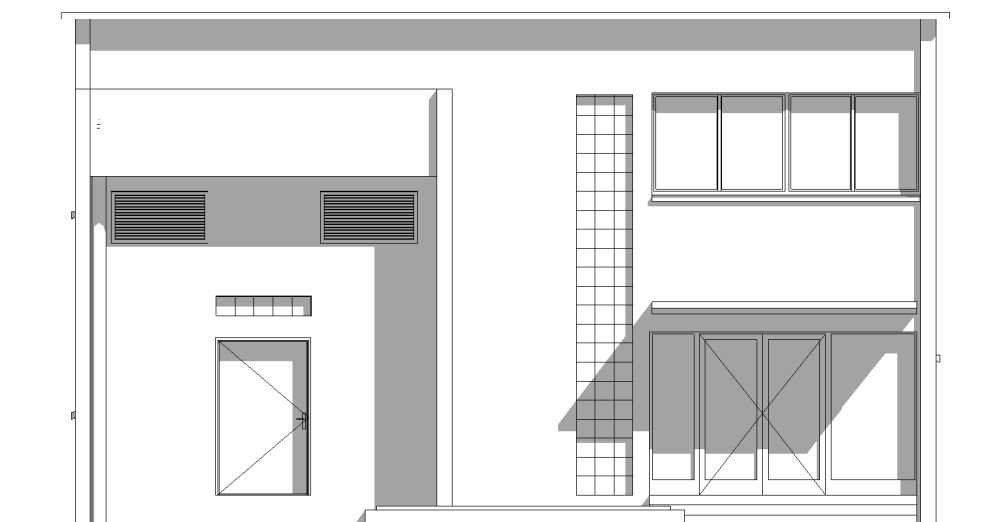




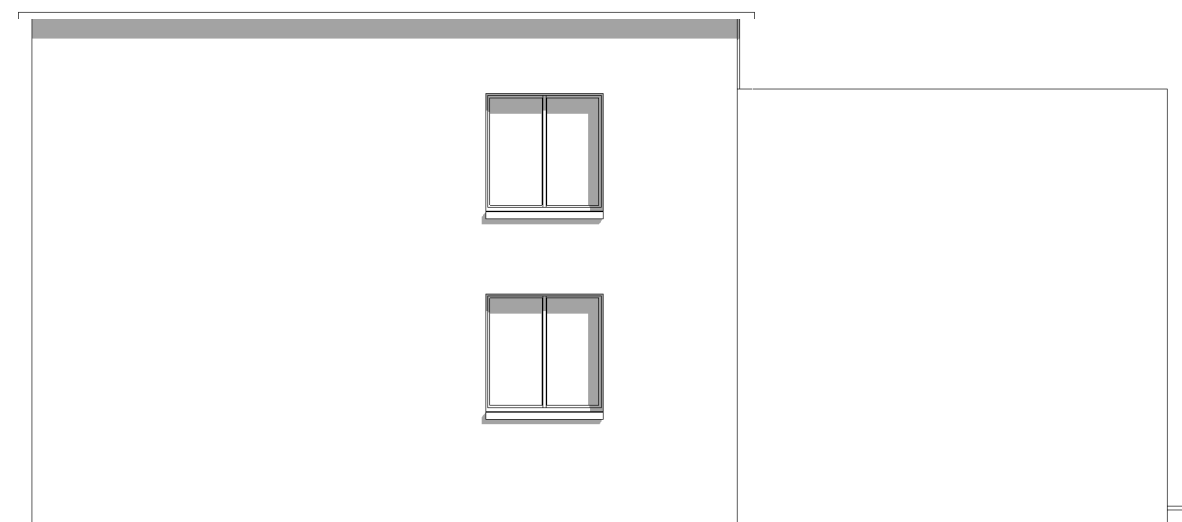
NORD



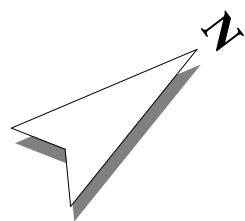
EST



SUD

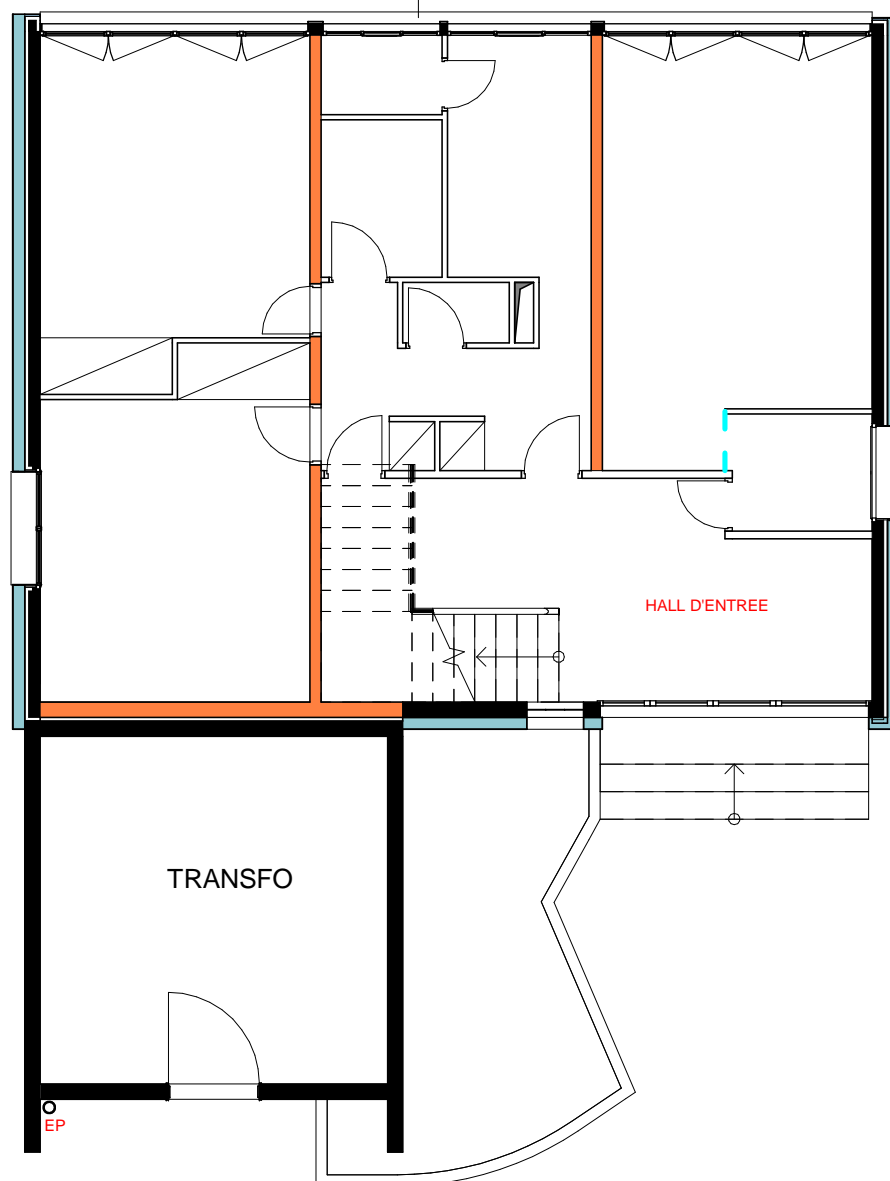


OUEST



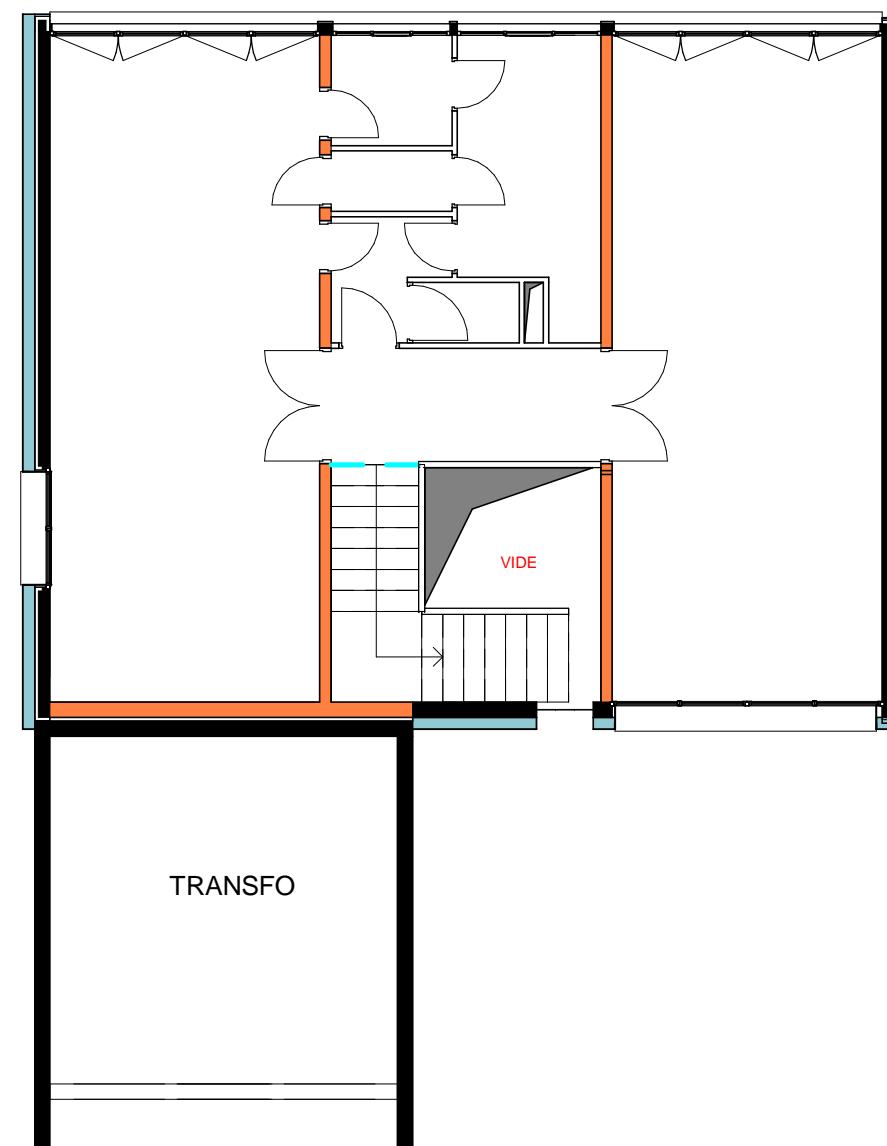
Enduit mince sur isolant en laine de roche  $\lambda$  38 épaisseur 160mm  $R > 4,2$ , finition taloche  $K < 1.5$

Bavette protection ITE en allège

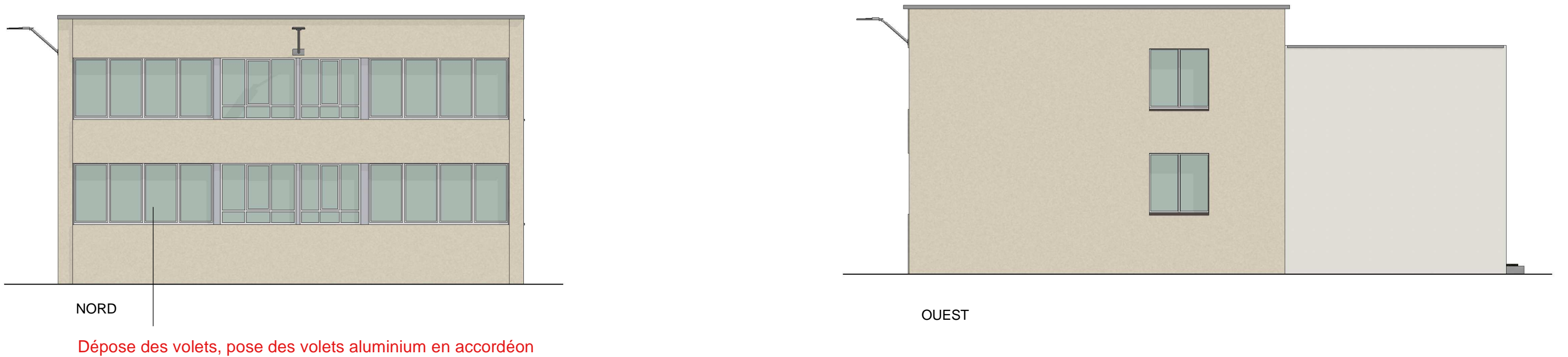
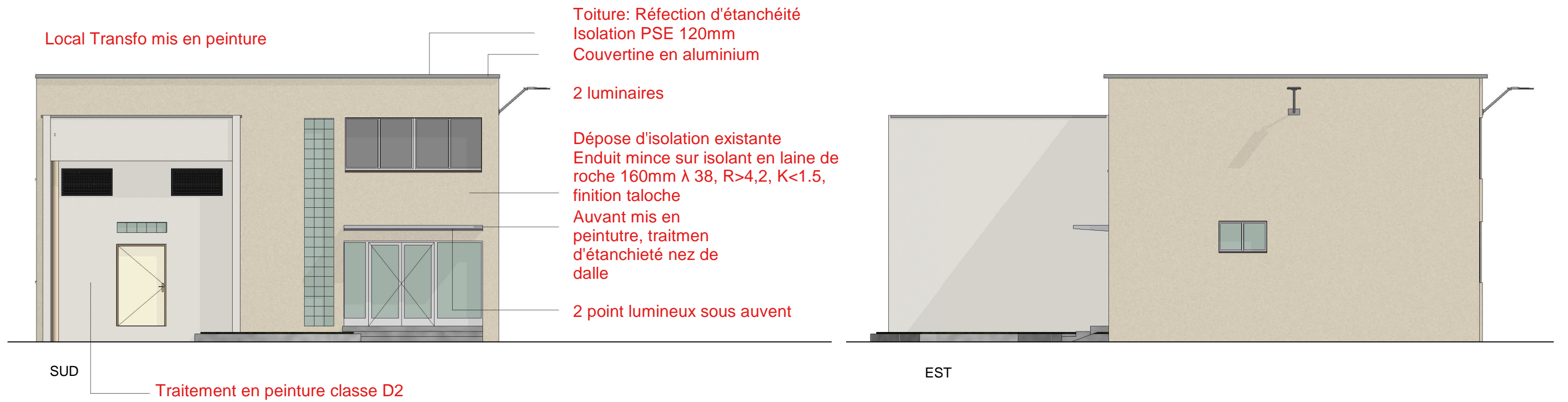


RDC

Retournement EMI LR 30mm  $R > 0.8$ ,  
finition K1



Etagé



Enduit mince sur isolant en laine de roche  $\lambda$  38 épaisseur 160mm  $R > 4,2$ , finition taloché  $K < 1,5$







